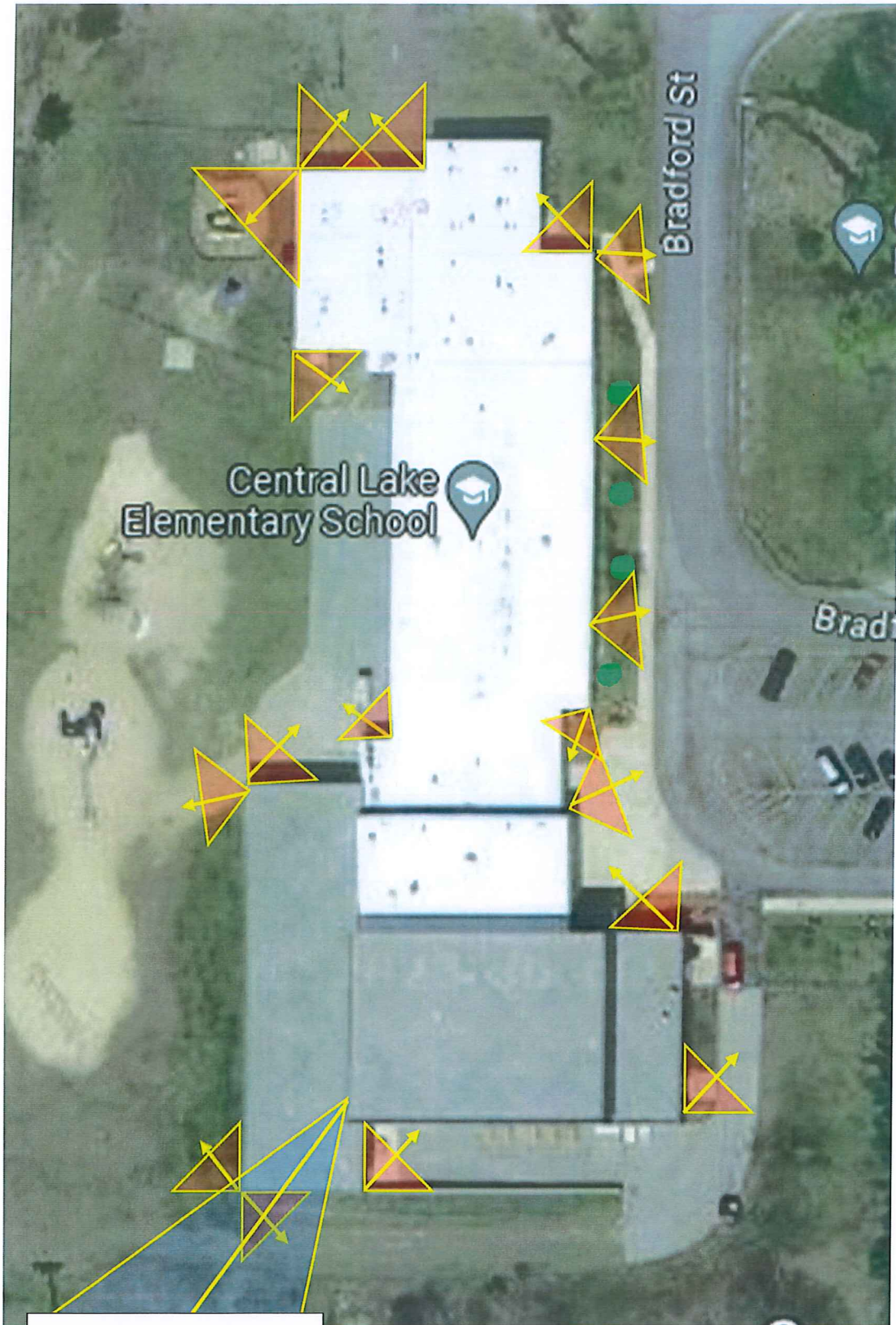


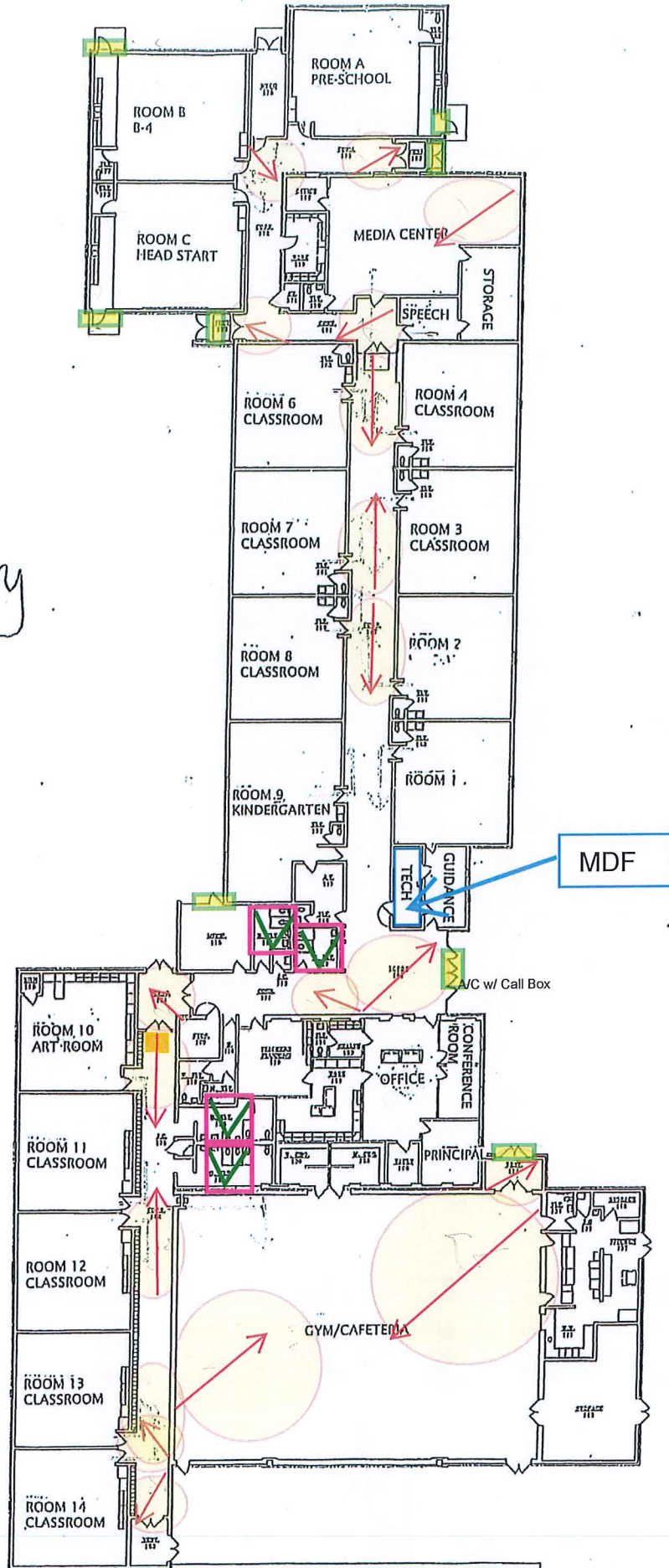
Central Lake Elementary School – Exterior – Sec Cam Map



To Baseball/Basketball 250'

Central Lake Elementary School - Security Camera - Internal

Elementary School



**SALES AGREEMENT
[Uniview Security]**

Date **1/23/2024**
Valid Until **4/1/2024**

Anavon Technology Group

Prepared By **JW**
Phone 877-872-0812
E-mail info@anavon.net
Federal ID 26-4297486
Address 1133 S. Airport Road Suite A
Traverse City, MI 49686

Estimate Number :06262

Date **1/23/2024**
Sales Person **JW**

Central Lake Elementary School

Customer

Business Name **Central Lake Public Schools**
Contact Name Mac Eckhardt
Federal ID
Address 8190 W State Street
PO Box 128
Central Lake, MI 49622
Phones 231-544-3141 x 54216
BTN/Fax (231) 544-2903
Email EckhardtM@CLPS.k12.mi.us

Ship To

SALES AGREEMENT, Estimate Number :[06262], Page 1 of 2

	Location (Area/City)	Product Description	Quantity	Total Amount
01	Central Lake Ele. School Exterior	IP Cameras 5MP Bullet Camera, 1/2.7" 5MP PS CMOS, Ultra 265/H.264/MJPEG, Human Body/Vehicle Detection features, max 20fps@5MP(2592x1944), 2.8mm lens, IR Distance up to 98 feet, **Built-in Mic** , 120dB True WDR, 0.005Lux Starlight, Micro SD up to 128GB, DC12V, PoE (u	18	\$4,770.00
02	Central Lake Ele. School Exterior	Mounting Hardware / Junction Boxes Wall Mount Bracket for IPC8542ER5-DUG.	18	\$594.00
03	Central Lake Ele. School Exterior	IP Cameras 8MP Varifocal Bullet Camera, 1/2" 8MP PS CMOS, Ultra 265/H.264/MJPEG, VCA features, max 15fps@4K(3840x2160), 2.8-12mm motorized lens, IR Distance up to 164 feet, 120dB Optical WDR, Micro SD up to 128GB, Audio I/O, Alarm I/O, BNC Out, DC12V, PoE (up to 10W	1	\$531.00
04	Central Lake Ele. School Exterior	Mounting Hardware / Junction Boxes Pole Mount Bracket for TR-WE45-IN.	1	\$33.00
05	central Lake Ele School Interior	IP Cameras 5MP Vandal Dome Camera, 1/2.7" 5MP PS CMOS, Ultra 265/H.264/MJPEG, Human Body/Vehicle Detection features, max 20fps@5MP(2592x1944), 2.8mm lens, IR Distance up to 98 feet, 120dB True WDR, 0.005Lux Starlight, Micro SD up to 128GB, Audio I/O, Alarm I/O, DC12	18	\$4,770.00
06	Central Lake Ele. School Interior	Mounting Hardware / Junction Boxes Wall Mount Bracket for IPC8542ER5-DUG.	18	\$594.00
07	Central Lake Schools	Others 24 Port CAT6 Patch Panel 1U	2	\$270.00

Location (Area/City)	Product Description	Quantity	Total Amount
08 Central Lake Schools	Switches Netgear 24 Port Gigabit All POE SWITCH24 x 1000BASE-T PoE+ Copper ports, 2 x 1000BASE-X Dedicated Fiber SFP ports, 190W PoE budget (max 32.4dB @ 25°C / 77°F ambient, Advanced VLAN support for better network segmentation	2	\$1,476.00
09 Central Lake Schools	Others Patch Cords	48	\$153.12

Labor (Not Taxable)

-Out of Town Travel (Technicians)-	5	\$625.00
-Cat6 Cable Run-	37	\$6,660.00
System Design (Per Location)	1	\$1,550.00

Terms and Conditions

Anavon Technology Group requires a 50% down payment with this order unless other financing arrangements have been made

Acceptance Signature/ Please sign and Fax 231-715-3283

Date

Taxable Sub Total	\$13,191.12
Sales Taxes (@\$0.00)	\$0.00
Non-taxable Sub Total	\$8,835.00
Total	\$22,026.12
Installation Cost	\$5,919.00
Total (With installation)	\$27,945.12

Payment Options: 36 Months	\$966.90	60 Months	\$625.97
-----------------------------------	-----------------	------------------	-----------------