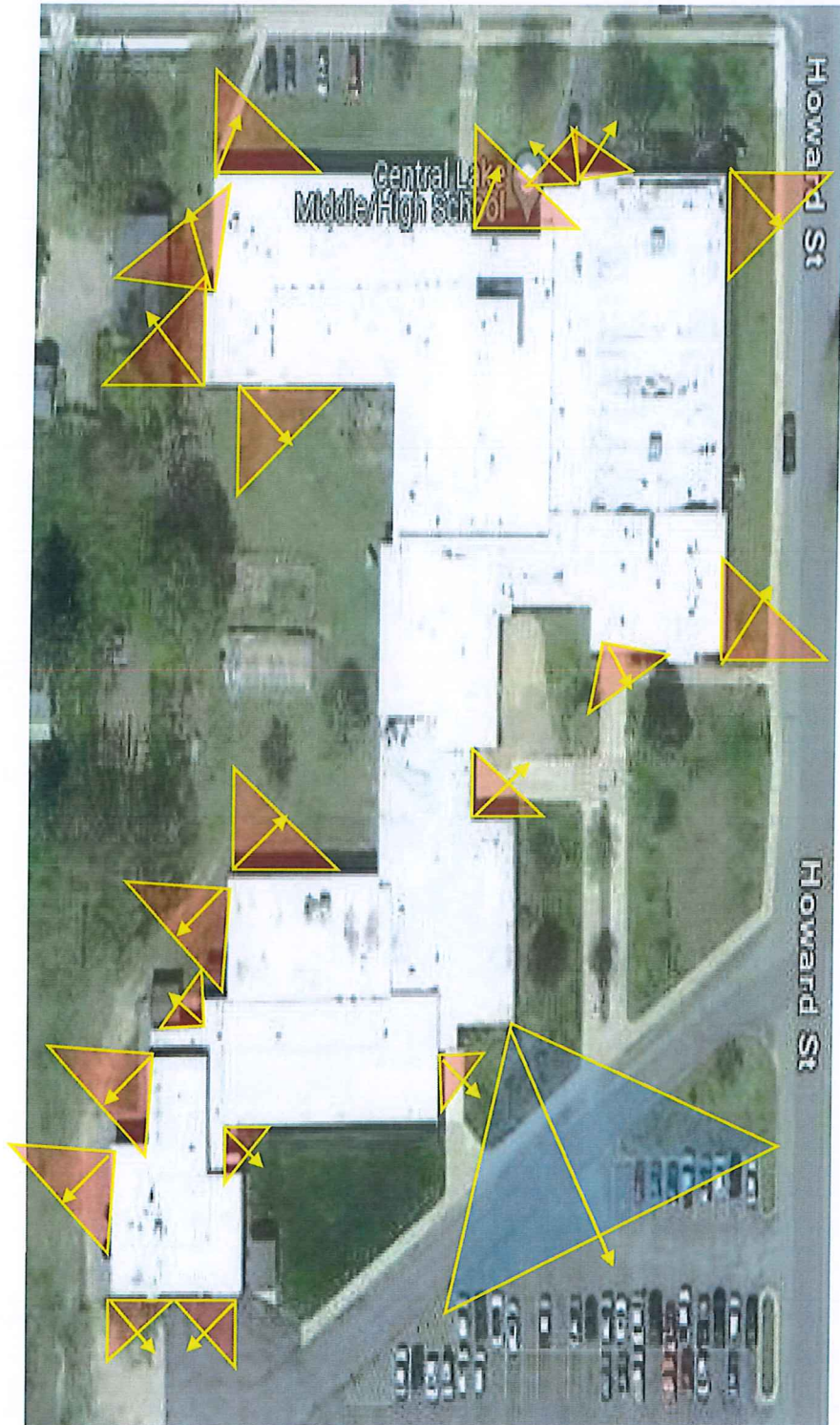
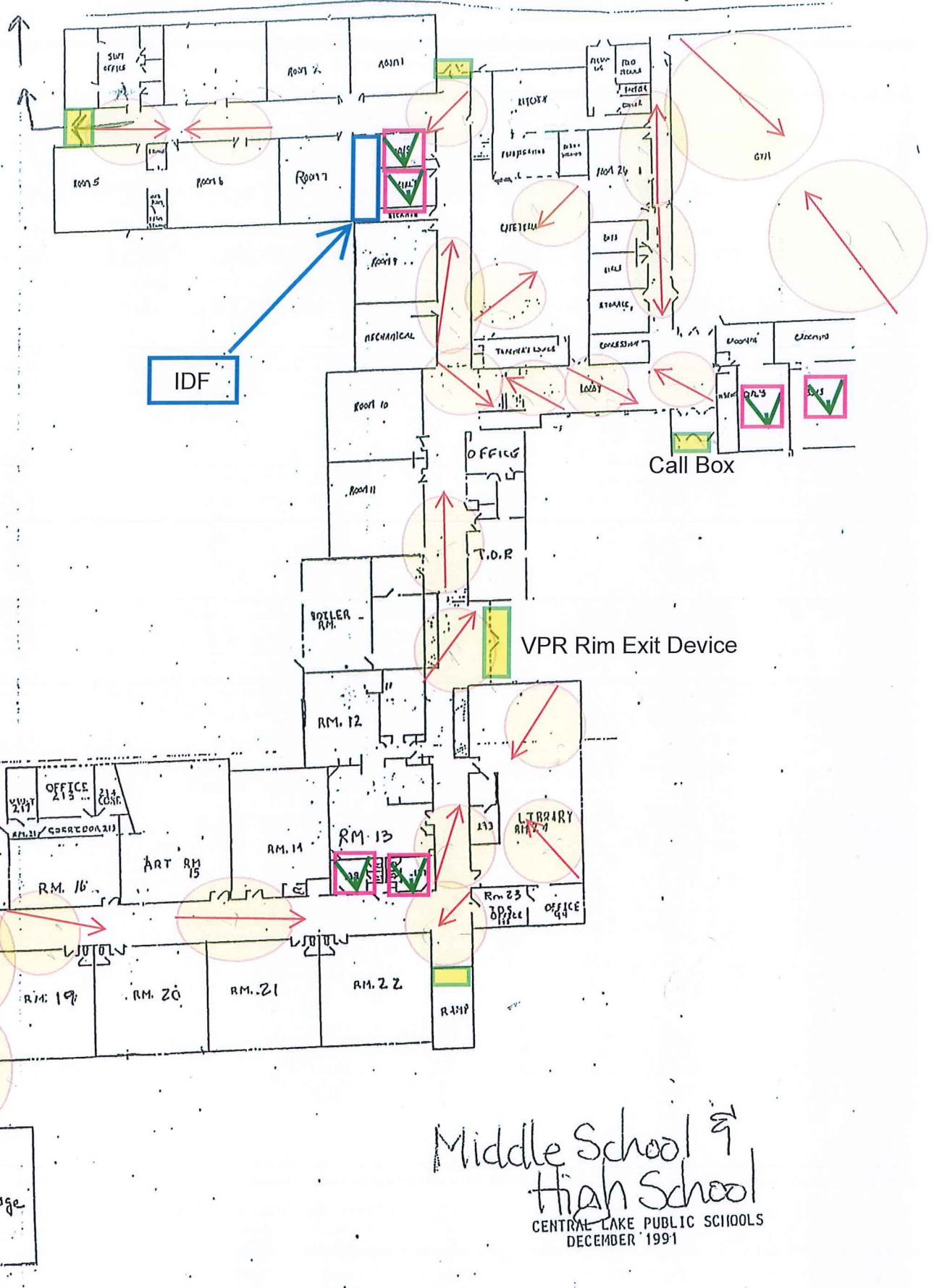


Central Lake Middle – High School – Sec Cam Map - External



Upball field



Middle School ↗
 High School ↗
 CENTRAL LAKE PUBLIC SCHOOLS
 DECEMBER 1991

★ you are here

SALES AGREEMENT
[Uniview Security]

Date **1/23/2024**
Valid Until **4/1/2024**

Anavon Technology Group

Prepared By **JW**
Phone 877-872-0812
E-mail info@anavon.net
Federal ID 26-4297486
Address 1133 S. Airport Road Suite A
Traverse City, MI 49686

Estimate Number :06263

Date 1/23/2024
Sales Person **JW**

Central Lake Middle / High School

Customer

Business Name **Central Lake Public Schools**
Contact Name Mac Eckhardt
Federal ID
Address 8190 W State Street
PO Box 128
Central Lake, MI 49622
Phones 231-544-3141 x 54216
BTN/Fax (231) 544-2903
Email EckhardtM@CLPS.k12.mi.us

Ship To

SALES AGREEMENT, Estimate Number :[06263], Page 1 of 2

	Location (Area/City)	Product Description	Quantity	Total Amount
01	Middle/High School Exterior	IP Cameras 5MP Bullet Camera, 1/2.7" 5MP PS CMOS, Ultra 265/H.264/MJPEG, Human Body/Vehicle Detection features, max 20fps@5MP(2592x1944), 2.8mm lens, IR Distance up to 98 feet, **Built-in Mic** , 120dB True WDR, 0.005Lux Starlight, Micro SD up to 128GB, DC12V, PoE (u	19	\$5,035.00
02	Middle/High School Exterior	Mounting Hardware / Junction Boxes Wall Mount Bracket for IPC8542ER5-DUG.	19	\$627.00
03	Middle/High School Exterior	IP Cameras 8MP Varifocal Bullet Camera, 1/2" 8MP PS CMOS, Ultra 265/H.264/MJPEG, VCA features, max 15fps@4K(3840x2160), 2.8-12mm motorized lens, IR Distance up to 164 feet, 120dB Optical WDR, Micro SD up to 128GB, Audio I/O, Alarm I/O, BNC Out, DC12V, PoE (up to 10W	1	\$531.00
04	Middle/High School Exterior	Mounting Hardware / Junction Boxes Wall Mount Bracket for IPC314, IPC32X Series, IPC3614SR3-ADPF28-F, IPC354SR3-ADNPF28-F and IPC3615SB-ADF28KM-I0.	1	\$33.00
05	Middle/High School Interior	IP Cameras 5MP Vandal Dome Camera, 1/2.7" 5MP PS CMOS, Ultra 265/H.264/MJPEG, Human Body/Vehicle Detection features, max 20fps@5MP(2592x1944), 2.8mm lens, IR Distance up to 98 feet, 120dB True WDR, 0.005Lux Starlight, Micro SD up to 128GB, Audio I/O, Alarm I/O, DC12	26	\$6,890.00
06	Middle/High School Interior	Mounting Hardware / Junction Boxes Wall Mount Bracket for IPC8542ER5-DUG.	26	\$858.00

SALES AGREEMENT, Estimate Number :[06263], Page 2 of 2

	Location (Area/City)	Product Description	Quantity	Total Amount
07	Central Lake Schools	Network Video Recorders 3U chassis, 128 channels, Up to 4K realtime live view/recording, H.265 dual-stream video compression, Bandwidth: 512Mbps (Live/Recording)/384Mbps (Web Transfer), 2 HDMI/VGA simultaneous video output up to 4K definition, two way audio, support 16 SATA Hots	1	\$4,315.00
08	Central Lake Schools	Hard Drive 6TB Western Digital Purple, SATA 6 Gb/s Interface, 3.5 inch Form Factor, IntelliPower RPM, 64MB Cache, Rated 24/7 CCTV Recording.	16	\$6,640.00
09	Central Lake Schools	Others 24 Port CAT6 Patch Panel 1U	2	\$270.00
10	Central Lake Schools	Others Patch Cords 1' - Slim Jacket - CAT6	48	\$148.32
11	Central Lake Schools	Switches Netgear 24 Port Gigabit All POE SWITCH24 x 1000BASE-T PoE+ Copper ports, 2 x 1000BASE-X Dedicated Fiber SFP ports, 190W PoE budget (max 32.4dB @ 25°C / 77°F ambient, Advanced VLAN support for better network segmentation	2	\$1,476.00

Labor (Not Taxable)

-Out of Town Travel (Technicians)-	10	\$1,250.00
-Cat6 Cable Run-	46	\$8,280.00
System Design (Per Location)	1	\$1,550.00
Training	2	\$300.00

Terms and Conditions

Anavon Technology Group requires a 50% down payment with this order unless other financing arrangements have been made

Acceptance Signature/ Please sign and Fax 231-715-3283

Date

Taxable Sub Total	\$26,823.32
Sales Taxes (@\$0.00)	\$0.00
Non-taxable Sub Total	\$11,380.00
Total	\$38,203.32
Installation Cost	\$10,304.20
Total (With installation)	\$48,507.52

Payment Options: 36 Months	\$1,678.36	60 Months	\$1,086.57
-----------------------------------	------------	------------------	------------